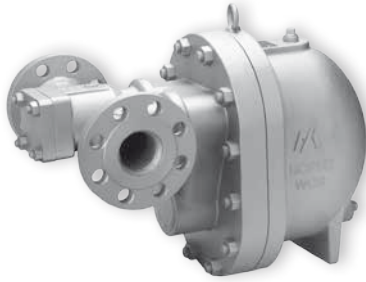
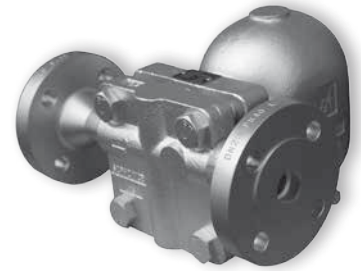


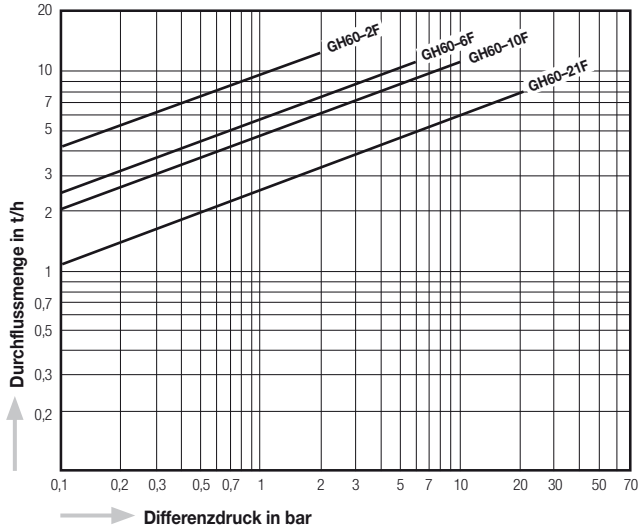
GH60



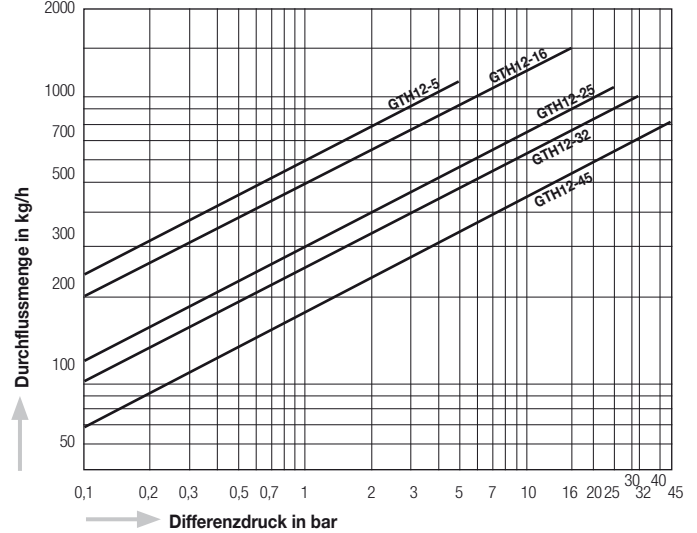
GTH12



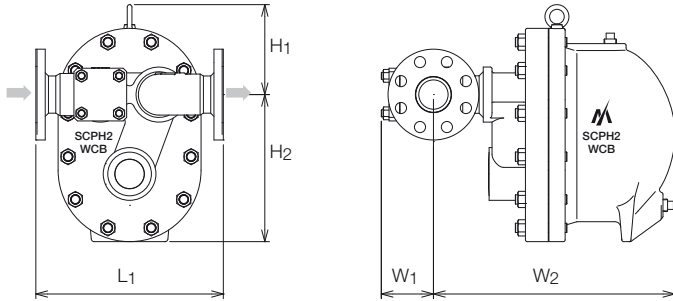
Durchflussdiagramm GH60



Durchflussdiagramm GTH12

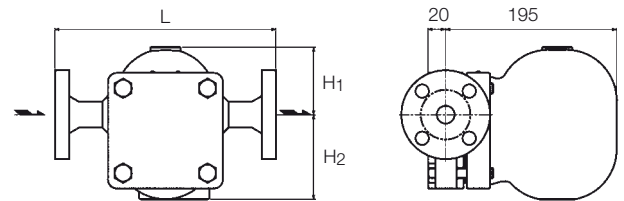


Abmessungen GH60

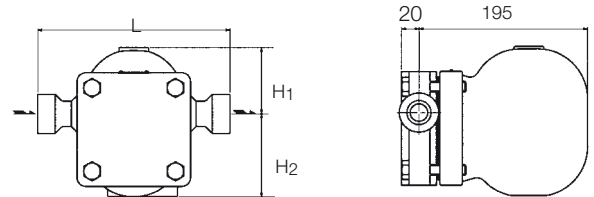


Abmessungen

GTH12-F Flansch



GTH12-W Schweißmuffe



Typ	Anschlussart	Nennweite	Max. zulässiger Betriebsüberdruck PMO	Max. zulässiger Differenzdruck PMX	Max. zulässige Betriebstemperatur TMO	Abmessungen (mm)						Gehäusewerkstoff		Gewicht kg
			bar	bar	°C	L	L1	H1	H2	W1	W2	JIS/ASME	vergleichbar mit	
GH60 -2F	Flansch JIS, ASME, DIN	50, 65 (2" - 2½")	2	2	400	320	155	250	90	410	SCPH2	GP240GH (1.0619)	75	
GH60 -6F			6	6										
GH60 -10F			10	10										
GH60 -21F			21	21										
GTH12 -5F	Flansch JIS, ASME, DIN	15 - 25 (½" - 1")	32	5	400	250	75	95			SCPH2	GP240GH (1.0619)	~14	
GTH12 -16F				16										
GTH12 -25F				25										
GTH12 -32F				32										
GTH12 -45F			50	45	425									
GTH12 -5W	Schweißmuffe JIS, ASME, DIN	15 - 25 (½" - 1")	32	5	400	220	75	95			SCPH2	GP240GH (1.0619)	~11,5	
GTH12 -16W				16										
GTH12 -25W				25										
GTH12 -32W				32										
GTH12 -45W			50	45	425									