

Steam Traps with Two-bolt Connection

DC1-21U

Balanced Pressure
Thermostatic Type



SU2-32U

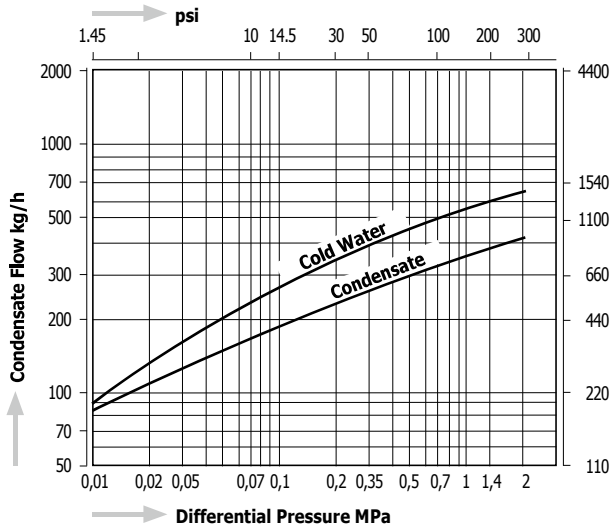
Thermodynamic Type



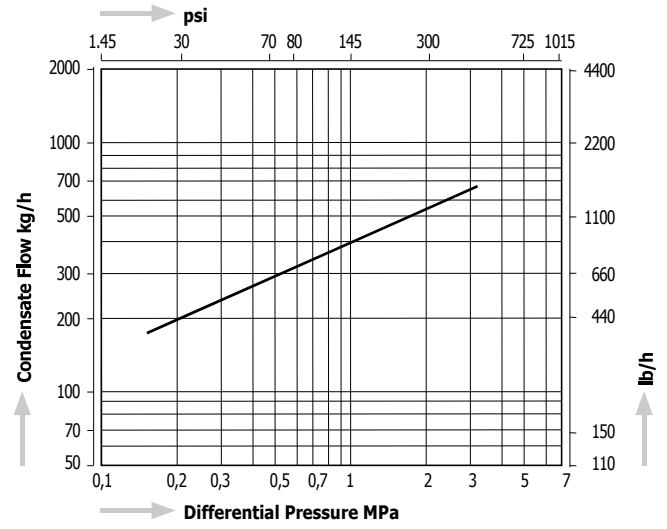
All models:

With stainless steel body and stainless steel internals. For horizontal and vertical installation. Two-bolt connection for simplified replacement of the steam trap.

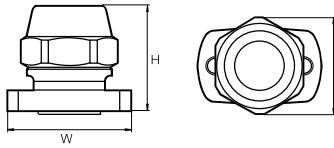
Capacity Chart DC1-21U



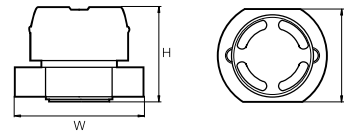
Capacity Chart SU2-32U



Dimensions



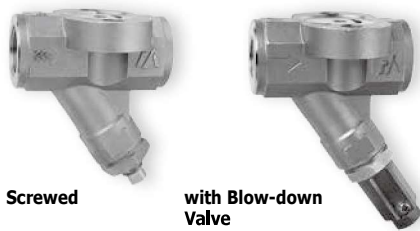
Dimensions



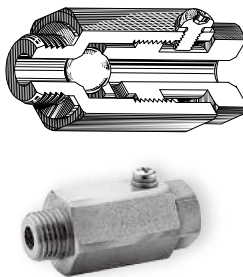
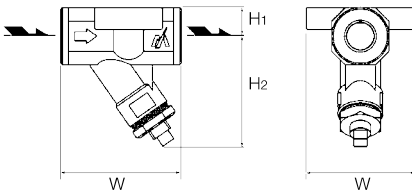
Model	Connection	Max. Operating Pressure		Max. Operating Temperature		Dimensions (mm)			Dimensions (in)			Body Material	Weight	
		MPa	psig	°C	°F	D	H	W	D	H	W		kg	lb
DC1-21U	Universal Two-bolt Connection	2,1	305	235	455	55	62	70	2.2	2.4	2.8	Stainless Steel CF8M	0,8	1.8
SU2-32U		3,2	464	350	662	60	55	70	2.4	2.2	2.8			

UNC Connector Body for Models: DC1-21U & SU2-32U

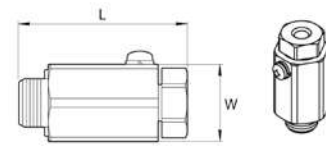
VB1, VB1R Blow-down Valve



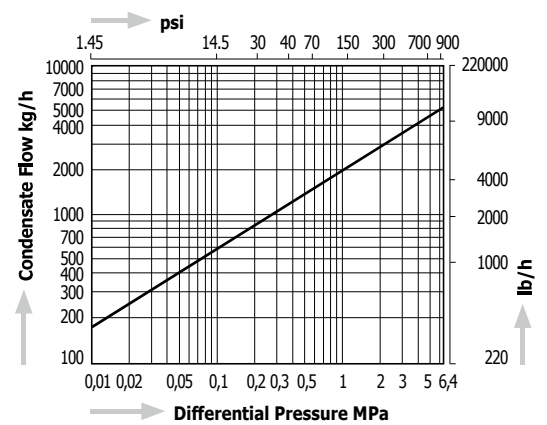
Dimensions



Dimensions



Capacity Chart



Model	Connection	Size	Max. Operating Pressure		Max. Operating Temperature		Dimensions (mm)				Dimensions (in)				Body Material	Weight	
			MPa	psig	°C	°F	L	H1	H2	W	L	H1	H2	W		kg	lb
UNC	Screwed & Socket Weld	1/2"	3,2	464	400	752	80	19	73	72	3.15	0.75	2.9	2.8	Stainless Steel A351CF8M	1,0	2.2
UNC-W		3/4"															
VB1	Screwed G	1/4"	6,4	928	425	800	46			25	1.8			1.0	Stainless Steel SUS304	0,08	0.18
VB1R	Screwed R																