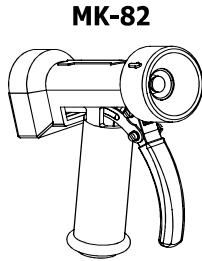
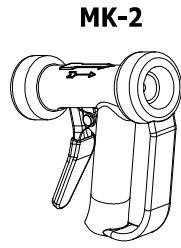


MK



Features

1. Trigger operated water gun. Front trigger or rear trigger available
2. Perfect water consumption control
3. One-handed mode with either variable spray or direct jet
4. Automatic and immediate shut-off when the trigger is released

Suitable for

- MK2** is suitable for most industrial applications
- MK-MV** is recommended for use with Steam-Water-Mixing Valves

Model	Material	Rubber Cover	Trigger	Orifice Size		Max. Pressure	
				in	mm	MPa	psi
MK-2	Gunmetal or Stainless Steel	Black or White	rear	5/16"	7,9	0,7	101.5
MK-OH				7/16"	11,1		
MK-MV				9/16"	14,3		
MK-78	Gunmetal	Black or White	front	5/16"	7,9	1,4	203.0
MK-80				7/16"	11,1		
MK-82				9/16"	14,3		

Pressure		Orifice Size			Orifice Size		
MPa	psig	5/16"	7/16"	9/16"	5/16"	7/16"	9/16"
		l/min			GPM		
0,035	5.0	3,2	13,5	15,0	0.84	3.56	3.96
0,07	10.2	5,6	20,0	21,0	1.48	5.28	5.54
0,1	14.5	7,0	22,5	24,0	1.85	5.94	6.34
0,2	29.0	10,0	25,0	36,0	2.64	6.60	9.50
0,3	43.5	12,5	32,0	47,0	3.30	8.45	12.41
0,35	50.8	14,5	37,0	52,0	3.83	9.77	13.73
0,4	58.0	16,0	38,0	55,0	4.22	10.03	14.52
0,5	72.5	18,0	40,0	60,0	4.75	10.56	15.84
0,6	87.0	20,5	42,0	65,0	5.41	11.09	17.16
0,7	101.5	22,3	44,0	69,0	5.89	11.62	18.22
1,0	145.0	27,5	51,0	-	7.26	13.46	-
1,5	217.5	35,0	62,0	-	9.24	16.37	-
2,0	290.0	43,0	74,0	-	11.35	19.54	-
2,5	362.5	50,5	85,0	-	13.33	22.44	-

CVC3, CVC3R, CV5R Check Valve

CVC3, CVC3R, CV5R

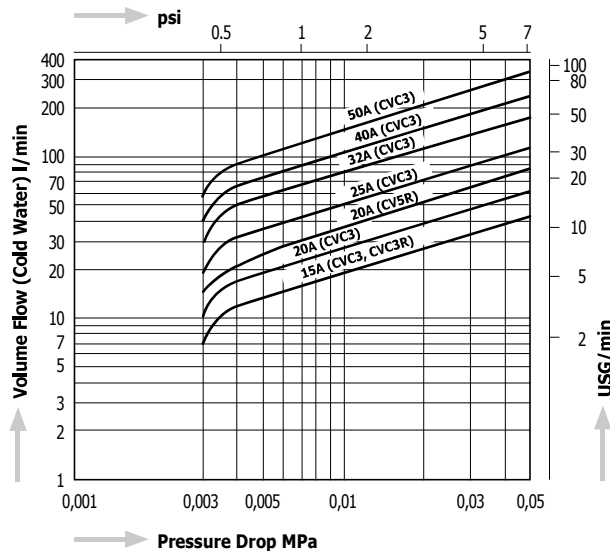


CVC3, CVC3R



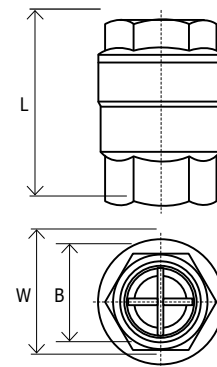
CV5R

Pressure Drop Chart

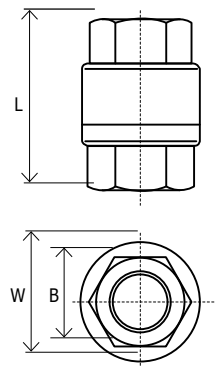


Dimensions

CVC3, CVC3R



CV5R



Model	Connections	Size	Max. Operating Pressure		Opening Pressure		Max. Operating Temperature		Dimensions (mm)			Dimensions (in)			Body Material		Weight	
			MPa	psig	MPa	psig	°C	°F	L	W	B	L	W	B	kg	lb		
CVC3	Screwed Rc, NPT	1/2"	2,1	305	0,003	0.44	220	428	48	35	27	1.9	1.4	1.1	Stainless Steel SCS13A	0,2	0.44	
		3/4"							61	43	33	2.4	1.7	1.3		0,3	0.66	
		1"							73	54	41	2.9	2.1	1.6		0,6	1.32	
		1 1/4"							80,5	62	50	3.2	2.4	2.0		0,8	1.76	
		1 1/2"							87	75	58	3.4	3.0	2.3		1,2	2.64	
		2"							100	90	72	3.9	3.5	2.8		1,8	3.96	
CVC3R	Screwed Rc, NPT	1/2"	2,1	305	0,003	0.44	80	176	48	35	27	1.9	1.4	1.1	SCS13A	0,2	0.44	
CV5R	Screwed Rc, NPT	3/4"	1,6	230	0,003	0.44	80	176	60	46	34	2.4	1.8	1.3	SCS13A	0,3	0.66	