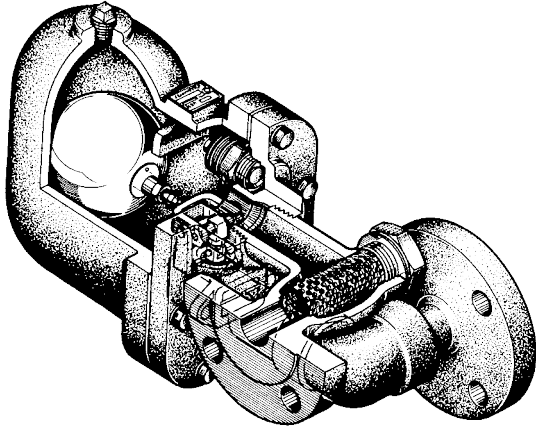
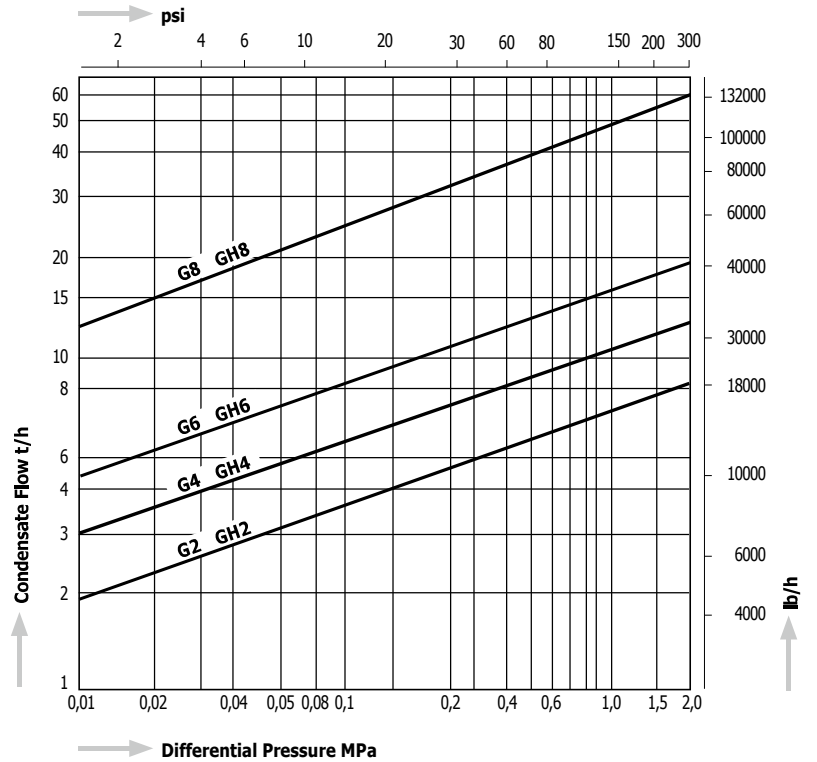


G2, G4, G6, G8 GH2, GH4, GH6, GH8



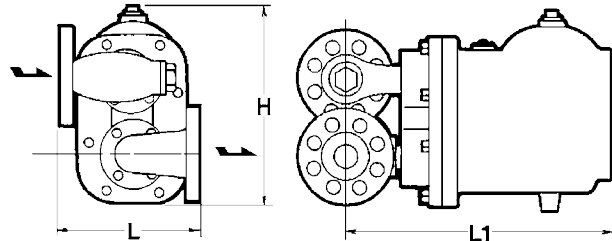
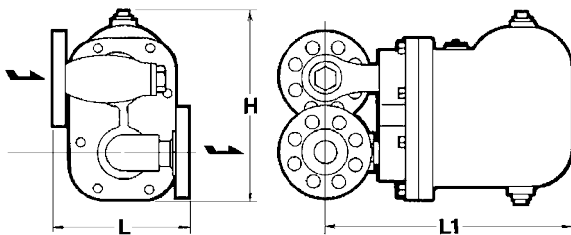
Capacity Chart



Dimensions

G2 / GH2

G4, G6, G8 / GH4, GH6, GH8



Model	Connections	Size	Max. Operating Pressure		Max. Operating Temperature		Dimensions (mm)			Dimensions (in)			Body Material	Weight			
			MPa	psig	°C	°F	L	L ₁	H	L	L ₁	H		kg	lb		
G2	Flanged JIS, ASME, DIN	1"	1,6	230	220	428	175	310	250	6.9	12.2	9.8	Cast Iron FC250	21	46.2		
		180					7.1										
		190					7.5										
		200					7.9										
G4	1 1/4" - 2"	200	380	320	7.9	14.9	12.6	38	83.6								
G6		1 1/2" - 3"	270	410	350	10.6	16.1	13.8	62	136.4							
G8			350	570	480	13.8	22.4	19.9	147	323.4							
GH2	Flanged JIS, ASME, DIN	1" - 1 1/2"	2,0	290	400	752	200	310	235	7.9	12.2	9.1	Cast Steel SCPH2	24	52.8		
210		8.3															
GH4		1 1/4" - 2"					200	380	320	7.9	14.9	12.6				43	94.6
GH6							1 1/2" - 3"	270	415	345	10.6	16.3				13.6	68
GH8		350						590	470	13.8	23.2	18.5				162	356.4