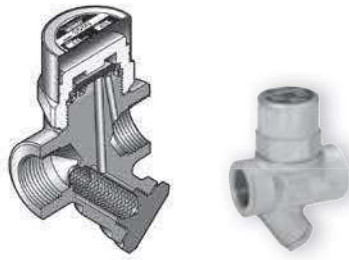
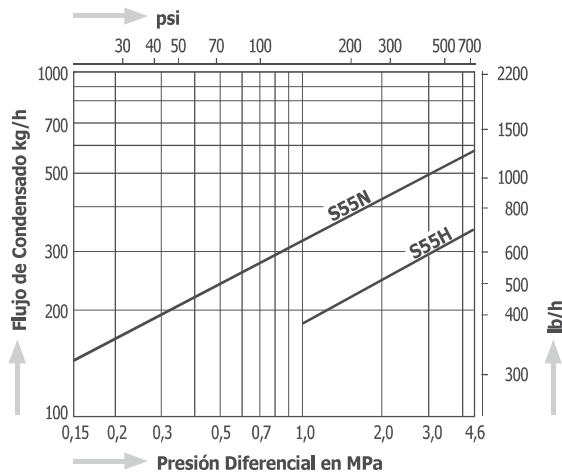


# S55N, S55H

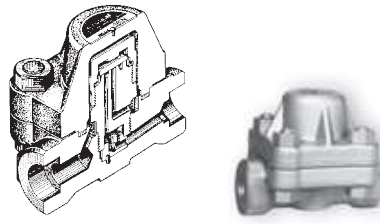


Dimensiones especiales "cara a cara" disponibles.

Diagrama de Capacidad S55N, S55H

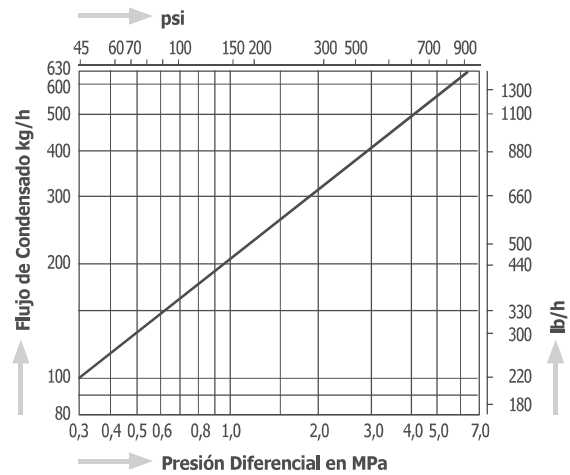


# S61N, S62N

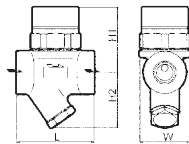


Dimensiones especiales "cara a cara" disponibles.

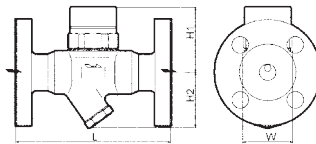
Diagrama de Capacidad S61N, S62N



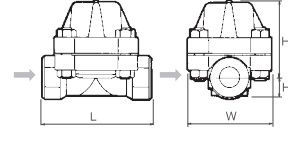
## Dimensiones S55N, S55H



## S55NF, S55HF



## S61N, S62N



## S61NF, S62NF

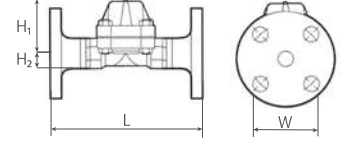


Tabla 1: Dimensiones L y Pesos

Modelo	Tamaño	ASME, Clase 600		JIS 63 K, ASME Clase 900		DIN, PN63, PN100		Peso	
		mm	in	mm	in	mm	in	kg	lb
S61NF S62NF	1/2"	200	7.9	220	8.7	210	8.3	9,2	20.2
	3/4"	210	8.3	230	9.1	230	9.1	10,5	23.1
	1"	240	9.5	240	9.4	230	9.1	11,2	24.6

Modelo	Tipo de Conexión	Tamaño	Rango de presión de operación		Máx. temperatura de operación		Dimensiones (mm)				Dimensiones (in)				Material del Cuerpo	Peso	
			MPa	psig	°C	°F	L	H1	H2	W	L	H1	H2	W		kg	lb
S55N (S55H)	Roscada Rc, NPT	1/2"	0,15 – 4,6 (1,0 – 4,6)	22 – 667 (145 – 667)	425	800	70	59	50	45	2.8	2.3	2.0	1.8	Acero Forjado A105	0,8	1.8
		3/4"					75	63	54	45	3.0	2.5	2.1	0,8		1.8	
		1"					140	119	101	86	5.5	4.5	3.8	3.0		1,2	2.6
S55NF (S55HF)	Bridada JIS, ASME	1/2"					165	59	50	45	6.5	2.3	2.0	1.8		2,9	6.4
		3/4"					165	59	50	45	6.5	2.3	2.0	1.8		3,8	8.4
		1"					175	141	121	104	6.9	2.7	2.3	1.9		5,3	11.7
S55NF (S55HF)	Bridada DIN	DN15					150	59	50	45	5.9	2.3	2.0	1.8		2,9	6.4
		DN20					150	59	50	45	5.9	2.3	2.0	1.8		3,8	8.4
		DN25					160	63	54	46	6.3	2.5	2.1	1.9		5,3	11.7
S55NW (S55HW)	Soldable (Socket Weld) JIS, ASME, DIN	1/2"					70	59	50	45	2.8	2.3	2.0	1.8		0,8	1.8
		3/4"	70	59	50	45	2.8	2.3	2.0	1.8	0,8	1.8					
		1"	75	63	54	46	3.0	2.5	2.1	1.9	1,2	2.6					
S61N (S62N)	Roscada Rc, NPT	1/2"	0,30 – 6,5	44 – 943	425 (S62N: 475)	800 (S62N: 887)	130	90	25	100	5.1	3.5	1.0	3.9	Acero Forjado A105 (S62N: A182F22)	5,3	11.7
		3/4"					130	90	25	100	5.1	3.5	1.0	3.9		5,3	11.7
		1"					130	90	25	100	5.1	3.5	1.0	3.9		5,3	11.7
S61NF (S62NF)	Bridada JIS, ASME, DIN	1/2"					Tabla 1	90	25	100	Tabla 1	3.5	1.0	3.9		Tabla 1	Tabla 1
		3/4"					Tabla 1	90	25	100	Tabla 1	3.5	1.0	3.9		Tabla 1	Tabla 1
		1"					Tabla 1	90	25	100	Tabla 1	3.5	1.0	3.9		Tabla 1	Tabla 1
S61NW (S62NW)	Soldable (Socket Weld) JIS, ASME, DIN	1/2"					130	90	25	100	5.1	3.5	1.0	3.9		5,3	11.7
		3/4"					130	90	25	100	5.1	3.5	1.0	3.9		5,3	11.7
		1"					130	90	25	100	5.1	3.5	1.0	3.9		5,3	11.7